

WHAU ARTS FESTIVAL
FROM GRIDLOCK TO ART-BLOCK

WALK, RUN, BIKE, DANCE THROUGH THE STREETS OF AVONDALE
AS WE RECLAIM OUR MAIN STREET FOR A DAY OF
FREE COMMUNITY PLAY! JOINING THE WORLDWIDE 'OPEN STREETS'
PHENOMENA, FROM NYC TO TĀMAKI, WHAU ARTS FESTIVAL
AVONDALE OPEN STREETS WILL HAVE A UNIQUELY WHAU FLOW
PACKED WITH MUSIC, ART, AND FANTASTIC KAI.

WHAU ARTS FESTIVAL

SAT 15 APRIL
3PM - 7PM
AVONDALE MAINSTREET

THE ROAD WILL BE CLOSED ON GREAT NORTH
ROAD FOR THE FESTIVAL BETWEEN ROSEBANK
ROAD AND CRAYFORD STREET WEST
FREE FOR ALL & ALL ARE WELCOME

FESTIVAL PRODUCER: JODY@WHAUTHEPEOPLE.COM

PR/COMMS: KIM@PACIFICECHOES.COM

WWW.WHAUTHEPEOPLE.COM

WTP x

Whau
Local Board
Auckland Council



OPEN
STREETS
AVONDALE



WHAU THE PEOPLE

Whau the People is an Avondale, Auckland-based multidisciplinary collective that exists to:

Create spaces, events, and occasions for the local community to engage with art in their neighbourhoods:

we've run projects at markets; in laundromats; at fish & chip shops; at dim sim restaurants; in parking spaces; on the river; in the local RSA clubrooms; in parks; and in empty sections; as well as in more "traditional" spaces such as galleries and performance venues. We also run an annual arts festival and year - round community arts space.

Support, bolster, and connect the local creative community:

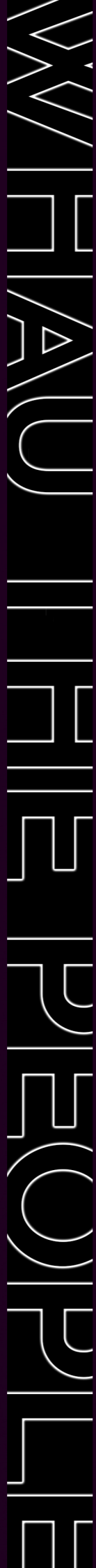
we provide opportunities for local creatives to take part in all these activities and are focused on finding ways for creative locals to develop their practice so what they are doing is the best possible version of what it can be. Our view of creative practice is broad: our projects have included creatives working in practices as diverse as siva, bonsai, installation art, documentary film, pipebands, and much more. The central home for our work is All Goods, an art space that has been fashioned out of a former pre-school and which shares its site with the local community garden.



2013 - collective formed /photo: Shelly Greco

WHAU THE PEOPLE

WHAU ARTS FESTIVAL



2014

IT'S GOING TO BE
**WHAU
KING
AWESOME**

6PM THURSDAY OCTOBER 16TH
THE URBAN PLANTATION
1915 GREAT NORTH RD | AVONDALE

You are invited to the official opening of the first-ever Whau Arts Festival - four days of community EPIC that will transform the vacant and empty spaces that litter Avondale's towncentre into thriving sites of creative energy.

whauthepeople.com

2015

**WHAU ARTS
FESTIVAL** 2015

OCT 15 - 18
AVONDALE

MUSIC • ART • POETRY • THEATRE • MORE!

1915 GREAT
NORTH
RD

whauthepeople.com

2016

**WHAU
ARTS
FESTIVAL**

2016

AVONDALE

Friday 21st Oct - Sunday 23rd Oct | main site @ All Goods - 1875 Great North Road

whauthepeople.com

2018

RIVERSDALE PARK
AVONDALE

SATURDAY 5th MAY

WHAU ARTS FESTIVAL

ALL DAY ALL WELCOME

WHAU ARTS FESTIVAL 2018

2019

**WHAU
ARTS
FESTIVAL**

Winter is Here

whauthepeople.com
[@whauthepeople](https://twitter.com/whauthepeople)

15 June - 7 July 2019

2020-21 free book (covid)

BTW...

2022

WHAU ARTS FESTIVAL 2022

MARCH 31 - APRIL 3

WHAUTHEPEOPLE.COM

2023

Open Streets Avondale

?

FOR ALL PROJECTS VISIT
WHAUTHEPEOPLE.COM



OPEN STREETS AVONDALE



WTP x

Whau Arts Festival
From gridlock to art-block

Walk, run, bike, dance through the streets of Avondale as we reclaim our main street for a day of free community play! Joining the worldwide 'Open Streets' phenomena, from NYC to Tāmaki, Whau Arts Festival Avondale Open Streets will have a uniquely Whau flow packed with music, art, and fantastic kai.

Ethnic/I love Avondale event
From bumper2bumper to block party

Kumusta, ni hao, afo mai, gather with us in Avondale for a day of free community play in a traffic-less street! Joining the worldwide 'Open Streets' phenomena, from NYC to Tāmaki, this Avondale Open Streets diversity celebration will have a uniquely Whau flow packed with global cuisines, cultural performances and family fun.

WHAU ARTS FEST

WHAU ARTS FESTIVAL

Matariki
From traffic lights to starry nights

Nau mai, haere mai, celebrate Matariki with us in Avondale for a day of free community play in a traffic-less street! Joining the worldwide 'Open Streets' phenomena, from NYC to Tāmaki, Matariki Avondale Open Streets will have a uniquely Whau flow packed with kai, cycling, and fun activities.

Xmas
From cars to carols

Carols, elves, and tinsel aplenty, come along to a car-less Christmas in Avondale with a day of free community play in a traffic-less street! Joining the worldwide 'Open Streets' phenomena, from NYC to Tāmaki, Christmas Avondale Open Streets will have a uniquely merry Whau flow, packed with entertainment and great food.

WHAU THE PEOPLE

Developed by Whau the People / Janet Lilo & Courtney Sina Meredith for Open Streets Avondale AT 2023



STOLEN / TIME INSTALLATION BY JANET LILO PHOTO TAKEN BY JUSTIN SPIERS, DUNEDIN ART GALLERY

FESTIVAL TEAM 23



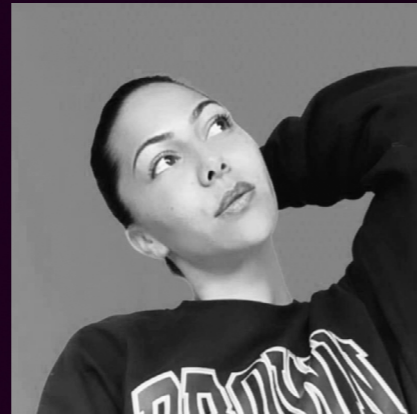
Festival Producer
Programme

Jody Yawa McMillan

Jody Yawa McMillan is a co-founding member of Whau the People Charitable Trust, Whau arts broker for the local board and works with Te Whau Pathway Trust on public art. Jody has a BFA in photography from Dunedin School of Art and has actively curated, organised and documented multiple art projects around Tāmaki makaurau and the whau. Jody has a strong sense of community and the not for profit through arts, education and social issues having also worked for NZ Housing Foundation, Avondale Community Preschool, Kelston Girls' College and local organisations. Jody's role in the festival as lead producer is more important than ever as Auckland faces funding cuts that threaten to end the brilliant mahi she and many others put into our local areas.

Jody says: "How to sum up the Whau Arts Festival? Constantly evolving and shifting and responding to the communities that create it...proudly connecting local arts with local people locally. Our neighbourhoods are the better for it."

The arts are not a "nice-to-have". They are inherent to our very being: since the earliest days of human civilisation, people have been painting, telling stories, singing and dancing, and doing this with other people in public spaces.



Producing team
Site manager

Dominique Crawford

(Ngāti Porou Ngāti Tū Wharetoa) is an actress, local artist, entrepreneur, event specialist and proud mother. You may remember her from iconic shows such as Holly's heroes, Jackson's Wharf or Outrageous Fortune. Pono by Dom is one of her latest ventures creating slick artisan home decor and fashion range which you can cop online! Originally from the Hawkes Bay, Dom relocated to Auckland completing her school-life in Avondale. After capturing audiences on screen and a bit of travel, we are proud to welcome Dom back as she juggles between running the hugely successful, I LOVE AVONDALE third Thursday events and now programming with Whau the People for the 2023 Whau Arts Festival.

Dom says: "Art is a key vessel within our community. To name a few it invokes love, understanding, togetherness, hope and is forever evolving. I'm elated I get to be a part of the process for Whau Arts Fest 2023. Mauri Ora!"



Producing team

Atarangi Anderson

(Te Aitanga a Hauiti, Ngati Hauiti) is a multidisciplinary artist most well known for their painting & barkcloth making. Her painting practise is often focused on human experience and a mix of social and natural environments. Her work draws deeply into her Māoritanga, whakapapa, and her life journey of continually seeking an equilibrium. The connection with Aute and the process to create her pieces are a natural weaving of ideas, textures and experiences, which are a reflection of the relations which connect and bind us to all, the past present and future in one continual conversation. Atarangi is the gallery coordinator at Whau the People's ALL GOODS space for creative arts and programming with Whau the People for the 2023 Whau Arts Festival.

Design / Marketing



Janet Lilo

(Te Rarawa, Alofi & Apia) is a co-founding member of Whau the People Charitable Trust, Whau arts broker for the local board and works with Te Whau Pathway Trust on public art. She is an educator and artist who has exhibited widely across Aotearoa and around the globe.

Janet says: "Being able to work within my own community context is a blessing - I take it seriously. I think the Whau Arts Festival is something so unique and so carefully crafted to the Whau because it is by us and for us. The collaboration of Open Streets Avondale not only highlights the importance of arts and culture but also but also creates wider conversations around the local environment and social issues."

FESTIVAL TEAM 23



Advisor / Programme

Bronwyn Bent

(co-founder of Whau the People) is an arts producer and programmer, theatre maker, and community arts practitioner with experience working with creative collaborators from a wide range of backgrounds and life experiences. She has worked internationally in professional theatre and arts festivals, and locally with organisations such as Hamilton Arts Festival / Toi Ora ki Kirikiriroa, Arts Access Aotearoa, Auckland Live, and Hobson Street Theatre Company.

Bronwyn says: "The arts are not a "nice-to-have". They are inherent to our very being; since the earliest days of human civilisation, people have been painting, telling stories, singing, and dancing, and doing this with other people and in public spaces."

Being able to work within our own community context is a blessing - I take it seriously. I think the Whau Arts Festival is something so unique and so carefully crafted to the Whau because it is by us and for us. The collaboration of Open Streets Avondale not only highlights the importance of arts and culture but also creates wider conversations around the local environment and social issues.



Writer / Open Streets

Courtney Sina Meredith

(Samoan, Māngaiān, Irish) is a distinguished cultural leader and author whose work delves into issues such as racism, sexism and poverty and draws on her Sāmoan roots. The author of five books, she was the University of Auckland's Young Alumna of the Year 2021. In 2016, Meredith was awarded the lifetime title of Honorary Fellow in Writing by the University of Iowa.

Courtney says: "I've loved working on the Whau Arts Festival Avondale Open Streets framework; and breathing life into the words beneath the mahi."



PR / Comms

Kim Meredith

is a Tāmaki Makaurau based multimedia artist. She recently co-directed and produced Floating Islands starring New Zealand's literary taonga Witi Ihimaera. Her works appear across various disciplines with a strong focus on the Pasifika zeitgeist.

Kim says: "Working on the Whau Arts Festival 2023 has been a great opportunity to get alongside artists in our community, I am especially excited to support and strengthen new voices."

Volunteers

Māori wardens

The guiding principles of the Māori Wardens are respect, awhi, aroha, and whānaungatanga. Their values - rangimarie, manaaki, kōrero, whakaiti, tautoko and pono. Alongside these values, the Māori Wardens have an intimate knowledge of and close connection to their local communities.

Māori Wardens have been supporting communities for over 150 years and have well-established relationships that enable them to work closely with whānau, Māori organisations, community groups and government agencies.

Despite their distinct uniforms, they are not police, but they have legal responsibilities under the Māori Community Development Act 1962.

Whau youth board

Youth from the Whau advocating for the youth in our community and helping to elevate their voice.

AT volunteers

AT to provide volunteers to the Opens Streets Avondale event - Whau Arts Festival.

Funding partners



WHAU ARTS FESTIVAL
FROM GRIDLOCK TO ART-BLOCK

WALK, RUN, BIKE, DANCE THROUGH THE STREETS OF AVONDALE
AS WE RECLAIM OUR MAIN STREET FOR A DAY OF
FREE COMMUNITY PLAY! JOINING THE WORLDWIDE 'OPEN STREETS'
PHENOMENA, FROM NYC TO TĀMAKI, WHAU ARTS FESTIVAL
AVONDALE OPEN STREETS WILL HAVE A UNIQUELY WHAU FLOW
PACKED WITH MUSIC, ART, AND FANTASTIC KAI.

ALL THE PEOPLE

SAT 15 APRIL
3PM - 7PM
AVONDALE MAINSTREET

AHUTOA LANEFALE AND PONO BY DOM
AIWA POOAMORN AND GEMISHKA CHETTY
ALEX SCOTT
BASANT MADHUR ENSEMBLE
BIKE AVONDALE
BIKE AUCKLAND VALET
CAPRICORE
CLAYWORKS MUSEUM
CREATURE POST
CRESCENDO
DEAHNE STONE
DR DERMOTT MCMEEL
DR YUSEF PATEL
E V A & S I A R 267
FIONA JACK
HOOPLA
HOLLI MCENTEGART
JEAN STEWART
JIMMY MA'IA'I
KATIE LEE
KING KAPISI AKA BILL URALE MNZM
KYAH SUCKLING
MALCOLM LAKATANI
MANA RĀKAU
MELISSA LAING
NGAMETUA RUBY
NIA VAVAO
PETER MCPHERSON
POI YEAH
POTAUAIN TAVAKEFAI'ANA
REBECCA RICE
SAMARA ALOFA
SAU E SIVA WEST AUCKLAND
SEAN KERR
SOULFUL GARDEN PARTY
SĒMISI FETOKAI
THE MAINE KWEENZ
TAHIMANA SIVA AFI
TE TOI UKU CROWN LYNN AND
THE CUBAN GROOVE
TIM DANKO + ELA TUKUHAUKAVA
WAITAKERE BRASS BAND
XIN CHENG AND ADAM BEN-DROR
¥OUNG GHO\$T

KEEP AN EYE OUT ON OUR WEBSITE
FOR THE RELEASE OF PERFORMANCE
TIMES AND LOCATIONS
WWW.WHAUTHEPEOPLE.COM

Whau
Local Board
Auckland Council



OPEN
STREETS
AVONDALE



WHAU ARTS FESTIVAL ARTISTS 2023

Ahutoa Lanefale and Pono by Dom

All we need is Aroha

Dargaville based Graphic Designer, Ahutoa Lanefale has been honing his skills in design for the past several years. Raised in Avondale, Auckland, he found his love for art at the Avondale library, in a book called Subway Art by Martha Cooper and Henry Chalfant. This encounter was essentially the start of his journey to becoming a designer. Originally aspiring to be a visual artist, Ahutoa's transition into Graphic Design allowed him to add another dimension to this union and broaden his skill set even further.

Pono by Dom – A Local Maker & Collaborator of "All we need is Aroha"



Image courtesy of the artists

Aiwa Pooamorn and Gemishka Chetty

Poetry Pop-up

Armed with a typewriter Aiwa Pooamorn and Gemishka Chetty will turn your words into poetry.

Aiwa Pooamorn and Gemishka Chetty are co-directors of Creative Creatures, a feminist arts collective featuring Asian diasporic voices. Their theatre-poetry show Have You Ever Been With An Asian Woman? won Auckland Fringe's 2020 Unf*ck The World award. They run numerous community poetry workshops and their works have been published online and in print.



Alex Scott's - free limited poster series edition

Auckland Libraries

Tamariki zone

Come and hang out with Georgia from New Lynn Community Hub and colour, fold, scratch and create something wonderful.

Try Scratch art Zen Colouring in and Origami! During the Whau Arts Festival.



Alex Scott

Whau the Taking

Whau the Taking is a celebration of my/our local area – a series of illustrations (one for each of the seven suburbs in the Whau) available as limited-edition pieces people can take home.

Alex Scott is an artist, cartoonist and illustrator based in Blockhouse Bay, TāmakiMakaurau. Drawn to moments of nostalgia, quietness and reflection in everyday life, she mainly works from photos in her phone's camera roll.

[instagram.com/alexscott.studio](https://www.instagram.com/alexscott.studio)
www.alexscott.studio

Bike Avondale

ARTY PARTY BIKE RIDE

Sat 15 April, 2pm

MEETING POINT: Huckleberry cafe,
34D Portage Rd, New Lynn

2:30 pm - Depart along the New Lynn
to Avondale shared path

Bike Avondale and the Whau Arts Festival invite you to join them on a musical art tour to the Whau Arts Festival in Avondale and celebrate the New Lynn to Avondale shared path!

Free coffee or warm drink from Huckleberry cafe at the start, and t-shirt and food giveaway at the end of the ride. Please advise if you'd like to borrow a Bike Avondale Community loan bike. Email bikeavondale@gmail.com with your bikey requests.

WHAU ARTS FESTIVAL ARTISTS 2023

Bike Auckland Valet

Park your bike up!

<https://www.bikeauckland.org.nz/event/bike-valet-at-auckland-marathon-expo>

Bike Auckland will be providing Bike Valet for the event. This means people can ride to the event and have the Bike Auckland volunteers watch over it the whole time.

Basant Madhur Ensemble

Journey through the Sounds of India

Join the renowned Basant Madhur Ensemble featuring vocals, violin, harmonium and tabla. Tabla master Basant has won numerous awards in India and accompanied international legends such as Grammy award winner Vishwa Mohan Bhatt (Ry Cooder), flautists Ronu Majumdar (Ravi Shankar) and Rakesh Chaurasia, alto saxophonist Kadri Gopalnath, and mridangam master Patri Satish Kumar. He has also collaborated with Western musicians in fusion music.

Comprising three generations of the Madhur whanau, Basant is director of the renowned Sargam School of Indian Music (Auckland) and tutors there with brother Deepak and father Professor Shukdev Madhur who specialise in violin. Basant's daughter Sargam on sitar and nephew Akhilesh on tabla complete the Ensemble.

<http://sargamschoolofmusic.co.nz/basant-madhur-ensemble/>

<https://www.facebook.com/profile.php?id=100089824927101&mibextid=LQQJ4d>



Capricore / Photo courtesy of the artists

Capricore

New music

Capricore are an Auckland based rock band consisting of Aidan Ripley on vocals and guitar, Jerrick Wilcox on bass, and James Zambucka on keys.

Their music often takes classic themes of Aotearoa and spins them through an alternative lens. They have already had a number of shows across Auckland city including performances at popular venues such as Ding Dong Lounge, Cassette 9, and the Whammy Bar. Capricore are set to record their debut singles in late April.

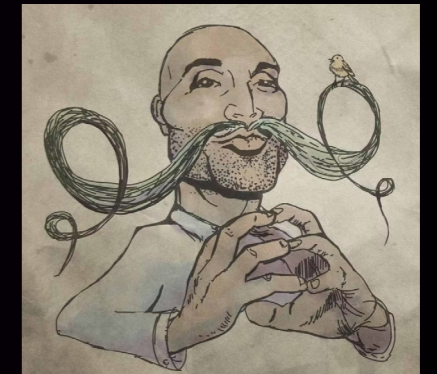
Fan favourites include Yeah Nah Yeah, Don't Shank Me, and Star In A Jar.

Creature Post

Cutting edge technology

Creature Post is a creative studio based in Auckland, New Zealand. Visual thinkers, image makers, post and experience designers who bring creative projects and unusual ideas to life. Using multiple toolsets and media platforms, we work at the intersection of entertainment, vfx, art and commerce.

<https://www.creaturepost.co.nz/>



Lakshman Anandanayagam
Kim Bladwinson



Images retrieved from website



Basant Madhur Ensemble / Photo courtesy of the artists

WHAU ARTS FESTIVAL ARTISTS 2023

Crescendo

Karaoke in the laundromat

Crescendo is a music and recording studio based in Auckland. With over 20 years experience, we specialise in sound design services for local and international productions. From audiobooks, podcasts, film & television to gaming, advertising and media, our clients range from big corporate brands to individuals working on personal projects.

Crescendo are a social enterprise with all profits going back to mentoring programmes for youth aged 15-24.

Join Crescendo in the laundromat for Karaoke!



Deahne Stone

Art making workshop with vinyl

Deahne Stone combines her social work skills and passion for the arts, directing them into supporting young people to successfully lead and complete community arts projects. She has been a familiar face in the Whau for over 10 years, after taking a recent break, we are excited to have her back! Deahne will be running the 'Bouncy decal' workshop. Make stickers with her and decorate the Bouncy castle...make sure you leave time for a bounce!

EVA & SIAR 267

New mural on power box Haven snowball

Eva Fuemana (EMF) is a visual artist working in public art, digital concept design and exhibition.

Most recently, she has been creating for clients internationally through engagement projects, design and murals. She was involved in a collaborative live art piece created in Dubai at the World Expo 2020 (2022). As part of the New Zealand pavilion's culture and entertainment programme.

Siar267 is a street artist based in South Auckland. With work and collaborations throughout New Zealand, he often explores his style through bold type and colour schemes.

His works have been showcased in NZ Street art magazines, the renowned Limn Art Gallery (The Main Line Exhibition.), and collaborative live art created at the Viaduct Pasifika Festival.

Fiona Jack

BLAH BLAH BLAH

Fiona Jack has a long history of making artworks for public space using billboards, posters and banners to present text works that respond to the context or epoch in which they reside. Piecing together a fabric of references that inform the development of each body of work, and often invite participation, consultation and/or collaboration with people and groups. Within this aggregation of people, contexts and ideas her projects reflect upon contemporary situations and the systems, ideologies and forms of resistance we use to shape and reshape them.

In the past decade she has developed a pottery practice focused on the production of wood fired domestic ware. The social dimension of her public artwork finds a quieter and more intimate set of relationships through this practice of making cups and bowls for eating and drinking together. She enjoys focusing on the details of how these vessels function (the thousands of ways the rim of a cup can be shaped for the lip to rest on) and their engagement with the body and the ways domestic objects are used. Shaping clay and vitrifying it through the heat of a wood fuelled fire is a process rooted in community, social history and the earth.

Image courtesy of Fiona Jack (detail in progress)



HOOPLA

Festival-goers invited to make a placard

HOOPLA is a ten year-old social enterprise producing urban research and place advocacy in Te Whau. Nina Patel grew up on the edge of Maungakiekie and on the Waitemata and lives with her whānau on the banks of the Whau awa in Rosebank. Kathy Waghorn hails from Ōmata, Taranaki and lives with her whānau in Kelston, across Wai te Whau.

Much creativity and invention is seen in the banners and placards people make when they join together in rallies, protests and marches. HOOPLA have noticed and admired these at the School Strikes for Climate Action, at the Canal Rd Trees and in the recent teacher strikes. These signs are a direct way of expressing feelings.

Festival goers are invited to make a placard about what they would do if the streets were really open. The placards will make a collective installation that can be moved from place to place.

www.hoopla.nz

Image courtesy of HOOPLA



WHAU ARTS FESTIVAL ARTISTS 2023

Holli McEntegart

Inhabit project (Auckland)

Holli McEntegart describes herself as a social practice artist and full spectrum doula. Inhabit combines both practices providing a social space for new parents to come together to share their postpartum experiences within a context of care and social activism. Placed at the intersection of birth and reproductive justice activism, it's timed to begin as we slowly open our lives back up, meet, share, explore and 'Inhabit' collectively.

Jean Stewart and Zarahn Southon

Whau Local Hero Portrait

The Whau Local Hero Portrait celebrates the heroes in our community. Presenting them with a painted portrait by a Whau artist is a unique way to honour them as well as have art produced that's especially important to people of the Whau.

With permission from the portrait owners, plans are in the pipeline to exhibit the collection of Local Hero portraits. There are currently four portraits and this year the Whau Arts Festival are excited to announce accomplished artist Zarahn Southon (Ngāti Tūwharetoa) will take over from Jean Stewart. The Whau Local Hero Portrait was started by artist and arts educator Jean Stewart, a painter based in Te Karanga ā Hape. Jean's practice explores the notion of narrative paintings and she's drawn to ways of finding meaning and connection that stretch the line of painting outside its physical form: 'so that the painting's art or weight is in its connection to people.

Katie Lee

New music

Katie's music is akin to a peaceful stroll through a meadow on a balmy spring day. After releasing their debut single "Lonely Hearts Club" in 2021, they have spent time truly honing in on their craft, drawing inspiration from the world around them.



Katie Lee /Image courtesy of the artist

Jimmy Ma'ia'i /Image courtesy of the artist



Jimmy Ma'ia'i

Te Whau Pathway Holiday Programme Avondale College ECE / Avondale Primary School / Avondale Intermediate

Jimmy Ma'ia'i is an artist based in Tāmaki Makaurau, of Sāmoan and Scottish descent. His practice makes use of found objects and readymade materials. Ma'ia'i draws upon his mixed-heritage, as well as experiences of cultural dislocation and colonisation to inform his sculptures.

Jimmy Ma'ia'i is workshopping the festival edition of the Whau Holiday Art Programme in collaboration with the Te Whau Pathway Project. Te Whau awa was a significant place where Māori gathered to cultivate food and gather kai moana, the many shell middens found there today a reminder of that time.

Working with students from Avondale Intermediate, Avondale Primary School and Avondale College Early Childhood Education Centre, they are using picnic tables as canvases to tell stories together about kai.

King Kapisi aka Bill Urale MNZM

Whau Arts Festival Emcee

A powerhouse of the Aotearoa New Zealand music industry, King Kapisi aka Bill Urale MNZM is a television presenter, entrepreneur, award winning songwriter/music video director and on April 15 will emcee the 2023 Whau Arts Festival mainstage.

The internationally renowned King Kapisi also has a strong local heart, launching Hoops And Life, a national basketball tournament in Tāmaki Makaurau Auckland and Otago Christchurch. He's worked closely with the NBA, NBL and NZ

He recently partnered with ANZ Bank and New Zealand Cricket writing a remix of his pacific anthem 'Screams from da old plantation' repping the Black Caps and White Ferns while performing his hits at Eden Park, Basin Reserve and Hagley Park! community, social history and the earth.



King Kapisi a.k.a Bill Urale MNZM - Image courtesy of the artist



Malcolm Lakatani

AND LIVE BAND!

Fakaalofa lahi atu!

Born and raised in Aotearoa, to Niue parents Taonepuna and Kristo Lakatani, Malcolm also has ancestry from Tonga and Papua New Guinea Islands too, it's no wonder his music is global.

Malcolm has toured internationally with Te Vaka, Che Fu and his own group the Malcolm Lakatani tour band. The educator is also a sound design artist and is founder of the Little Souls Music Academy.

Melissa Laing

Photo essay

An artist, theorist, curator and event producer, Melissa lives on the banks of the Whau River, where Kelston meets New Lynn. She started exploring the river eight years ago by boat and on foot; from Green Bay to Motu Manawa. She works across film, photography, conceptual writing, print, sound, sculpture and social exchange.

Threaded through Tāmaki are pockets of wildness – paths, waters, and bush remnants that pull you out of the urban context and immerse you in a different environment. Their wildness made strange by the very proximity of the city. The estuarine islands of Motu Manawa and Te Kou are two such places. Casual access to them is cut off by the brutal sweep of the motorway along the coast. A sweep that erases the islands from sight. Leaving the shifting ecology of mangrove mud, cockle shell, shore primrose, needle grass, glasswort and mud snails to collect there.

melissalaing.com



Image courtesy of Melissa Laing

Mana Rākau

Great North Rd Trees

Mana Rākau is a community group which arose in 2020 from the campaign to save the Canal Road native trees in Avondale, Tāmaki Makaurau. We are dedicated to advocacy for the protection of trees in recognition of their inherent value, their mana, and their importance for human wellbeing, mātauranga Māori, biodiversity, and climate change.

For the Whau Arts Festival, members of Mana Rākau will be sharing their love for the significant trees which are also protected in front of Avondale Primary.

Join them for a tree tour, tree care and abseiling these taonga that line our main road in Avondale.

<https://saveourtrees.nz/>



Photo: Jody Yawa McMillan

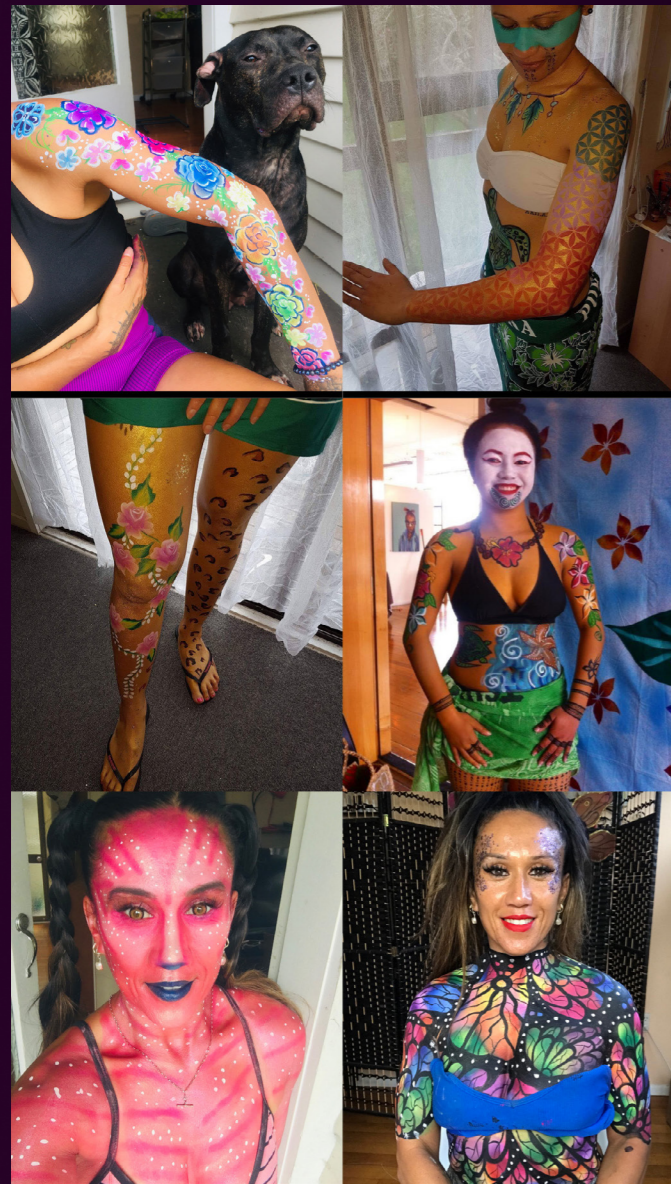
WHAU ARTS FESTIVAL ARTISTS 2023

Ngametua Ruby

The Body Is A Canvas

Face and Body paint artist Ngametua loves painting especially faces, bodies and canvases.

Ngametua first started face-painting at a community police event in Papatoetoe a few years now. She says 'seeing each and every child's face light up with amazement and joy after they have been painted' is a great motivator in her practice. The personal trainer and fitness coach is eager to spread her wings into the film industry, as well as set up colour therapy workshops for people with special needs, at risk youth and the wider community as a whole.



Nia Vavao

Fambam Station

Musician and Artist Nia Vavao also known as spdrtnbby will have the Fambam Station to capture your portrait. She will create a photo set inspired by her recent feature music video 'Birds and the Eagles - Jarna ft spdrtnbby' especially for the Whau Arts Festival.

Nia will also perform her recent release with artist Big Al on the guitar.

Fambam is an art project by artist Janet Lilo that has popped up at various Whau the People projects over the years.



Poi Yeah

Poi making workshops with Te Rina & Tyler Gregory-Hawke

Ko Maungakiekie te maunga
Ko Waitematā te moana
Ko Māhuhu ki te rangi te waka
Ko Ngāti Whātua te iwi
Ko Te Taoū, Te Uringutu, Ngā Oho ngā hapū
Ko Orākei te Marae
Ko Te Rina Gregory-Hawke toku ingoa.

I am a young mama from Tāmaki Makarau and I am the founder and director of Poi Yeah! Poi Yeah is a small pakihi Māori that makes mātauranga Māori accessible through a contemporary take on taonga Māori.

www.poiyeah.co.nz

(Te Rina pictured below)



Rebecca Rice

New music

Rebecca Rice, a talented artist from West Auckland, draws her musical inspiration from the likes of NIKI, Blanks, Queen and more. Her music is a melodic weaving of heartfelt emotion and personal life experience, a beautiful narrative of her stories.

She has plans to release her debut single Dear Best Friend at the end of April 2023



All images courtesy of the artists.

WHAU ARTS FESTIVAL ARTISTS 2023

Sau e Siva West Auckland

Siva performance

Sau e Siva West Auckland teaches tama'ita'i and adults the foundations of Siva Samoa. We are committed to growing our community and sharing the Samoan culture through dance. Cheehoo!

For this year's Whau Arts Festival, we will share what our students have learnt this term, from our youngest students of 5 years to our oldest students of 21+ years. We are also continuing our overarching theme from last year, which is looking at measina or treasures and how our tangible and intangible culture can aid our diasporic communities to re/connect to the aganu'u.

<https://linktr.ee/seswa>



Sean Kerr

Climate Change on Avondale

Sean lives in Avondale and is an artist that tinkers with technology and humour. A new work created for the festival uses an LED street sign and open CHATGPT to generate real-time absurd comments on the effects of Climate Change on Avondale. Thanks to Men at Work for sponsoring the sign and their tech knowledge to this work

Soulful Garden Party & Exhibition

ALL GOODS GALLERY
99 Rosebank Road
7:30pm -11:30pm

New tone, AJ Honeysuckle, Samara Alofa, Dylan, Jesse & Jeremy.

Art exhibition Samara Alofa, Zeki & Tyrone Te Waa (outside)

MORE INFORMATION TO COME

Samara Alofa

Soulful Garden Party & Exhibition

ALL GOODS GALLERY
99 Rosebank Road
7:30pm -11:30pm

Samara Alofa is a multi-disciplinary Artist, based in Tamaki Makaurau, Aotearoa. Samara explores abstract storytelling through Poetry, Sonic Sampling of ancient chants, polyrhythmic beats and Songlines of their mixed Pasifika heritage. Samara will be sharing some of their Soundscapes and Songwriting around the relationships and connections to the Physical and Metaphorical Waters that are living and breathing all around us.

Through Sonic Storytelling Samara will be exploring the emotions and frequencies of ancestral connection to water (wai/vai). They will explore contemporary and electronic elements of their craft through sampling and mixing elders voices, old songlines/chants and poetry.

Samara Alofa



AJ Honeysuckle

Soulful Garden Party & Exhibition

AJ Honeysuckle's sound is creative, liberating, and free. Drawing on her

Sāmoan heritage and experience on dancefloors in Ōtautahi, the Tāmaki-based artist weaves heartfelt tapestries of dub, dancehall, 2step, r'n'b,

amapiano, whatever. Her free-wheeling performances make audiences pop off, and have earned her quick renown throughout the motu.

In a world of beatgrids and stale sounds, AJ Honeysuckle rises above, exuding reverence for the creative potential of music and the endless possibilities of life.

All images courtesy of the artists.



AJ Honeysuckle

WHAU ARTS FESTIVAL ARTISTS 2023

TahiMana

Siva Afi / Get fired up!

TahiMana is a family-run professional fire dance group based in Auckland. The group comprises up-and-coming youth, with the occasional guest appearance from the original adult fire dancers. Accompanied by live drumming from the performers' parents, TahiMana is a family affair. TahiMana continues to inspire young people through their shows at community festivals, celebrations and assistance with Siva Afi workshops.

At Whau Arts Festival, Tahimana ensures we bring the 'fire' to Siva Afi or Ailao Afi to you! We are committed to be a part of the Siva Afi community that preserves and promotes the art of Fire Knife Dancing. Our performance will encapsulate the evolution of the nifo oti ailao siva to now ailao afi. We are fortunate to have the 2023 Senior Schools Champion of Siva Afi - Jayden Suni, as well as Portia who placed in the top 3 perform alongside their amazing team members. Come and watch Tahimana get fired up!



All images supplied by artists and organisations.

Tim Danko + Ela Tukuhaikava

Come and create like a boss!

"PUT YOUR EARMUFFS ON !"
Mapura Avondale Art Group feat. guest artist Ela Tukuhaikava

MĀPURA studios West Auckland art group has been creating in the All Goods space on a weekly basis for three years, and it's time to share that working space on the street!

"PUT YOUR EARMUFFS ON !" will present the working of the group's artists in the open air with an open invitation for Whau Fest attendees to contribute, collaborate and experience the open creative space that has been nurtured within All Goods art space.

Māpura Avondale Art Group are:

Tairi Andrew, MinJi Baik, Tina Malu, Tiana Mataio, Koki Yadav, Brayden Griffiths, Robert Penney and first safety officer Tim Danko.

Māpura Studios is an inclusive art space formed in 2000 with a focus on supporting artists from the disability community.

www.mapurastudios.org.nz



Te Toi Uku Crown Lynn and Clayworks Museum

The Hands that Made Crown Lynn

Te Toi Uku tells the story of the importance of the clay industry that fired the material to build the very fabric of Auckland, as well as having made the Crown Lynn plates that fill the country's pantries with crockery. The Museum celebrates Auckland's ceramic history centred in the strategic location of the Whau/New Lynn.

The Hands that Made Crown Lynn project seeks to find Pasifika workers who worked for Crown Lynn. Throughout the Whau they are distributing call-out postcards of archival photographs of workers on the factory floor and exhibiting posters on the Great North Rd gallery.

At the time Crown Lynn reached out to immigrant communities, sending recruiters to the Pacific Island nations as well as reaching out to Māori who migrated from rural areas and came to Tāmaki Makaurau. Te Toi Uku is interested to hear from anyone who worked at Crown Lynn, or has family that did to share you their story.

WHAU ARTS FESTIVAL ARTISTS 2023

The Cuban Groove

LIVE DANCE!

We live in Avondale on the edge of the Whau Estuary and love to create exciting and engaging live musical performances and interactive dance events that energise and make people happy, and bring communities together. Our events feature some of this country's leading musicians and dancers who originate from the four corners of the globe and have made Aotearoa their home.

Our professional team is led by two highly experienced practitioners in their respective fields. Originally from Cuba, our creative director, Isbert Ramos Mediaceja, widely known as Vivio, is a professional dancer, teacher and choreographer who has lived in Aotearoa for 20 years. Our commercial director, Taranaki-born Justine Harvey, is an accomplished arts editor and communications specialist who is widely published, and has organised and promoted numerous events at high-profile festivals, such as the Venice Biennale in Italy.



Photo of Vivio in action / courtesy of the artist

THE MAINE KWEENZ

Performance

Established in 2006, this incredible group consists of beautiful and talented Samoan Fa'afafine women who hail from Kelston. This group has their own unique twist on Pacific island, contemporary and vogue dance, here to support the Whau Festival, Introducing

THE MAINE KWEENZ!



The Maine Kweenz | Kahaki photography

Unitec Dr Yusef Patel Sēmisi Fetokai Potauain Tavakefai'ana Kyah Suckling Peter McPherson Dr Dermott McMeel

Toutai -`a-Maui : Maui's Catch

Three plinths display a moment in time of Maui's tussle with his great Ika.

The old navigators of these ocean continuously saw Aotearoa as The land of the long white cloud. They also saw Maui tussling with his great Ika in the surface of the great ocean as a way of understanding the formation of land in the ocean, over time and space.

Translated to modern time-space, the old world naturally sought to become in-sync with the natural world. They interpret it as a rhythm and are translated to abstract patterns outlines in these sculpt forms. Different communities are also forged in different yet similar patterns and rhythm.

These artworks seek to express the same way of looking from the old world through the present into the future world. A way of seeing the community from the past through the present into the future. The Moana, European and Asia communities share these essence of patterns.

Toutai-`a-Maui (Maui's Catch) capture not only the story of the great fisherman and navigator Maui but also look at the

natural formation of this land; from below the ocean is an ongoing and dynamic and natural process.

Each plinth will display a particular moment in time of Maui's tussle with the fish. All three plinths can be united and can also be read as one, showing the many moments brought together over Time and Space. Abstract dimensions between Maui and the fish are interchanged in their tussle and exchange of force. The intimate relation between the fish and canoe through Maui and his hook can be reflected on the notion of the 3x plinths.

Dr Yusef Patel is a Senior Lecturer and Academic Programme Manager at the School of Architecture, Unitec - TePekenga, focusing on social-building activities and community interventions.

Sēmisi Fetokai Potauaine is a multi-media artist across a number of disciplines, notably architecture and sculpture. Sēmisi is a lecturer at Unitec- TePekenga, Director of Archtists and SemisifPotauaine Art.

Kyah Suckling currently studies a Bachelor of Architectural studies at Unitec - Te Pukenga.

Peter McPherson is the Head of the School of Architecture at Unitec - Te Pukenga. Dr Dermott McMeel is a senior lecturer and researcher in Creative Technology and Architecture at Huri Te Ao at AUT University, focusing on social, organisational and cultural disruption with technology.

@te_pukenga &
@unitec_school_of_architecture
@abodowood (project sponsors)
@yusefpatel
@k.s.designz
<https://www.semisifpotauaine.com/>

WHAU ARTS FESTIVAL ARTISTS 2023

Waitakere Brass Band

Make some noise!

Waitakere Auckland Brass has been making music in West Auckland for the last 100 years!

All our musicians are passionate amateurs who devote a huge amount of their free time to the band, every piece we perform takes hours of rehearsal time and personal practice. Some of our players have been involved for decades, others for a much shorter time, but everyone brings enthusiasm and dedication that makes our band one big family.

Contest: Our members hail from all over Auckland and some farther afield who join the ranks in the lead up to big events and contests. The band rehearses twice a week in New Lynn at our Portage Road Bandroom.

If you are interested in joining our band, we would love to hear from you

<https://waitakereaucklandbrass.com/>
[https://www.facebook.com/search/top?q=waitakere auckland brass band](https://www.facebook.com/search/top?q=waitakere+auckland+brass+band)

Xin Cheng and Adam Ben-Dror

Local Making – Nomadi Tea Hut

Local Making is an invitation for open-source making, joyful playing, inquisitive thinking and resourceful living in an interconnected world.

The Nomadic Tea Hut offers hands-on making and friendly sharing around locally-grown plants and surplus materials. Come and join in the play! Locally-foraged tea will be available.

@adambendror
@urbanepiphyte



Images courtesy of the artists.

Young Ghos\$

Rapper, lowrider and interpreter.

Young Ghos\$ is a hakka from Meizhou City, Canton Province, China. He moved to Tāmaki Makaurau Auckland 16 years ago and loves Aotearoa New Zealand. His music style is east meets west, rapping in English, Mandarin, Cantonese, etc.

'I love performing and making music.'

He also customises lowrider bikes, his bike club is Lowprofile Society and having the best of both worlds, has a day job he loves, working as a medical interpreter.

'My art is who I am, where I am from, where I am now, and where I will be, to use averse from my song to describe is: 'cultures intertwined, trying to blur the line.'

@youngghost86

Zarahn Southon

Whau Local Hero Portrait

Ko Tongariro te maunga
Ko Taupō-nui-a-Tia te moana
Ko Ngāti Tūwharetoa te iwi
Ko Ngāti Kurauia te hapū
Ko Te Heuheu te tangata.

Zarahn Southon started painting and drawing at 17, having studied the work of German expressionists Max Beckmann and Otto Dix, the Weimar Republic of the 20's and 30's with the rise of Fascism became an area of great interest. He travelled to Europe to study the Old Masters and returning to Aotearoa New Zealand was fortunate to exhibit his works. He found Anthony Ryder's Complete Guide to Figure Drawing in an art store and this changed his life.

Zarahn won the contemporary Pacific Scholarship 18 years ago, allowing him to study in the basics of sight size in Florence, Italy. He later travelled to France to study at Studio Escalier and portraiture with Ted Seth Jacobs at BACAA in the United States of America in 14 years ago. His practice today continues to question and critique his methodology in painting.

A proverb from his Ngati Tuwharetoa ancestor the prophet Ngatoroirangi on mutual aid:

Ka u ki matanuku
Ka u ki matarangi
ka u ki tenei whenua
Hei whenua te mau e kai te manawa o tauhou

I arrive in lands strange to me
I arrive with strange skies above
to the people of the land, I offer my heart as food for thee



Self-portrait / retrieved from www.zarahnsouthon.com

WHAU ARTS FESTIVAL
FROM GRIDLOCK TO ART-BLOCK

WALK, RUN, BIKE, DANCE THROUGH THE STREETS OF AVONDALE
AS WE RECLAIM OUR MAIN STREET FOR A DAY OF
FREE COMMUNITY PLAY! JOINING THE WORLDWIDE 'OPEN STREETS'
PHENOMENA, FROM NYC TO TĀMAKI, WHAU ARTS FESTIVAL
AVONDALE OPEN STREETS WILL HAVE A UNIQUELY WHAU FLOW
PACKED WITH MUSIC, ART, AND FANTASTIC KAI.

SEE
YOU
THERE!

SAT 15 APRIL
3PM - 7PM
AVONDALE MAINSTREET

THE ROAD WILL BE CLOSED ON GREAT NORTH
ROAD FOR THE FESTIVAL BETWEEN ROSEBANK
ROAD AND CRAYFORD STREET WEST
FREE FOR ALL & ALL ARE WELCOME

FESTIVAL PRODUCER: JODY@WHAUTHEPEOPLE.COM

PR/COMMS: KIM@PACIFICECHOES.COM

WWW.WHAUTHEPEOPLE.COM

KEEP AN EYE OUT ON OUR WEBSITE
FOR THE RELEASE OF PERFORMANCE
TIMES AND LOCATIONS
WWW.WHAUTHEPEOPLE.COM

WTP x

Whau
Local Board
Auckland Council



OPEN
STREETS
AVONDALE



MEDIA RELEASE

THE UPCOMING WHAU ARTS FESTIVAL OPEN STREETS WILL SEE FESTIVAL-GOERS DANCING IN THE MAINSTREET OF AVONDALE. PERFORMANCES AND ACTIVITIES BY RENOWNED LOCAL CREATIVES, INCLUDING DJ KING KAPISI, WILL BE OUT IN FULL FORCE FOR A DAY OF COMMUNITY PLAY SATURDAY APRIL 15. FESTIVAL ORGANISERS' WHAU THE PEOPLE SAY GIVEN THE TUMULTUOUS START TO 2023 THE FESTIVAL IS AN OPPORTUNITY FOR COMMUNITIES FROM THE WHAU WARD TO COME TOGETHER.

JOINING THE WORLDWIDE OPEN STREETS PHENOMENA FROM NYC TO TĀMAKI, THE EIGHTH WHAU ARTS FESTIVAL OPEN STREETS WILL HAVE A UNIQUE WHAU FLOW PACKED WITH MUSIC, ART, AND FANTASTIC KAI.

TRAFFIC WILL CLOSE TO GREAT NORTH RD FROM THE LENGTH OF ROSEBANK ROAD DOWN TO THE ICONIC SPIDER SCULPTURE (OPPOSITE CRAYFORD STREET WEST) SOME 200 METRES, ALLOWING THE FESTIVAL TO SPILL OUT INTO THE STREET. 'WE CAN CELEBRATE OUR HOMEGROWN CREATIVES AND FULLY IMMERSE IN THE MANY FANTASTIC PERFORMANCES AND ACTIVITIES PROGRAMMED FOR THE DAY. YOU CAN WALK, RUN, BIKE OR DANCE THROUGH THE MAIN STREET OF AVONDALE, IT'S GOING TO BE A DAY OF CELEBRATION.'

FESTIVAL ORGANISERS REITERATED THE IMPORTANCE OF ART FOR THE COMMUNITY: 'ART IS SO IMPORTANT, ESPECIALLY AS WE NAVIGATE THE COVID ERA. NOW WE FACE HEAD ON THE IMPACT OF CLIMATE CHANGE. ARTISTS PRODUCE WORK THAT MIRRORS AND CELEBRATES OUR EXPERIENCES AND IDENTITY; THERE'S NOWHERE ELSE IN THE WORLD TO SEE THIS EXPRESSION OF OUR COMMUNITIES CAPTURED SO UNIQUELY BY OUR INCREDIBLE ARTISTS.'

BIG UPS TO OUR FUNDERS AUCKLAND TRANSPORT & THE WHAU LOCAL BOARD

THE FESTIVAL KICKS OFF AT 3PM WITH ITS PROGRAMME RUNNING UNTIL 7PM.
MORE INFORMATION ABOUT THE FESTIVAL PROGRAMME CONTACT:

KIM MEREDITH
KIM@PACIFICECHOES.COM
0274357591

ENDS